

# Potential Use of Compounds from Neem Leaves (*Azadirachta indica* Juss) as PPAR $\alpha$ and ER $\alpha$ Inhibitors to Control Breast Cancer Cell Growth In Silico Model

*by* Supriyanto Supriyanto

---

**Submission date:** 01-Jun-2023 12:59PM (UTC+0700)

**Submission ID:** 2106535389

**File name:** Lampiran\_III.B.4.5.pdf (411.49K)

**Word count:** 2371

**Character count:** 13206



Research Article

## Potential Use of Compounds from Neem Leaves (*Azadirachta indica* Juss) as PPAR $\gamma$ and ER $\alpha$ Inhibitors to Control Breast Cancer Cell Growth *In Silico* Model

Supriyanto<sup>1\*</sup>, Muhaimin Rifa'i<sup>2</sup>, Yunianta<sup>3</sup>, Simon Bambang Widjanarko<sup>3</sup><sup>1</sup>Postgraduate Program, Faculty of Agriculture, Brawijaya University, Malang, Indonesia, 65145<sup>2</sup>Department of Biology, Faculty of Mathematics and Natural Sciences, Brawijaya University, Malang, Indonesia, 65145<sup>3</sup>Department of Food Science and Technology, Faculty of Agricultural Technology, Brawijaya University, Malang, Indonesia, 65145

8

**ARTICLE INFO****ABSTRACT****Article History**

Received 30 May 2020

Revised 15 June 2020

Available online 6 July 2020

\*Email of author corresponding:  
supriyanto@trunojoyo.ac.id

Treatment using herbs is currently growing rapidly. Compounds in herbal plants can cure various degenerative diseases. The study aims to analyze the potency of nimbin, deacetylnimbin, salanin, and deacetylsalanin compounds in the neem leaves extract to inhibit target proteins namely PPAR $\gamma$  and ER $\alpha$ . PPAR $\gamma$  is the main regulator of the function of adipose tissue microvascular endothelial cells (aMVECs) while ER $\alpha$  is a protein that mediates all estrogen effects and it is important in the growth of prostate and breast cancer. Inhibition of ER $\alpha$  can prevent the proliferation and growth of breast cancer cells by affecting the performance of estrogen which binds to hormonal receptors and causes inhibition of breast cancer cell proliferation. The results of *in silico* analysis show that deacetylnimbin can inhibit ER $\alpha$  protein. The docking analysis shows that deacetylnimbin has the potential to replace tamoxifen as a breast cancer drug. The other studies such *in vitro* and *in vivo* are needed to validate *in silico* study.

Keywords: Neem leaves, PPAR $\gamma$ , ER $\alpha$ , breast cancer, *in silico* study**1. Introduction**

The number of deaths caused by cancer is increasing. According to World Health Organization (WHO), death cases that are caused by cancer in 2016 were 8.6 million and increased up to 9.6 million in 2018. The main causes of cancer are high body mass index, low consumption, lack of physical activity, smoking, and excessive alcohol consumption. Environmental pollution, food additives, and carcinogenic contamination can also trigger cancer disease.

Several studies have shown that extract of neem leaves has bioactivity which can inhibit the growth of cancer cells [1]. Desacetylnimbin is one of the compounds in the extract of neem leaves which can prevent the growth of breast cancer cells through apoptosis mechanism [2]. Azadirachtin has potential as an inhibitory compound for the growth of cervical cancer cells [3]. However, the mechanism of inhibition of cancer cells at molecular level by those compounds in the neem leaves extract is unclear.

The purpose of this research is to study the potential of compounds in the neem leaves extracts against the peroxisome proliferator-activated receptor gamma (PPAR $\gamma$ ) protein and estrogen receptor alpha (ER $\alpha$ ) which play a role in the growth of cancer cells. PPAR $\gamma$  is the main regulator of the function of adipose tissue microvascular endothelial cells (aMVECs). PPAR $\gamma$  can suppress cancer growth in humans by apoptosis and induction of differentiation. ER $\alpha$  is a protein that mediates all estrogen effects and it is important in the growth of prostate and breast cancer [4].

Estrogen plays an important role in development of breast cancer. This compound will bind to estrogen receptors so that complex formation can trigger cell proliferation [5]. Common chemical treatment uses tamoxifen to inhibit the growth of cancer cells. Tamoxifen, an "anti-estrogen" compound, works by competing with estrogen to bind to estrogen receptors in breast cancer cells. Tamoxifen is known as a selective estrogen receptor modulators (SERMs). This compound helps to inhibit the growth and development of breast cancer cells by blocking [6]. The aim of this study is to analyze the potential of nimbin, deacetylnimbin, salanin and deacetylsalanin compounds as PPAR $\gamma$  and ER $\alpha$  inhibitors in the growth of breast cancer *in silico* model.

## 2. Materials and Methods

### 2.1. Materials

The three-dimensional structure of azadirachtin, nimbin, deacetylnimbin, salanin, and deacetylsalanin compounds is downloaded on the website: <https://pubchem.ncbi.nlm.nih.gov/>. The structure of PPAR $\gamma$  and ER $\alpha$  target proteins is downloaded on PDB (Protein Data Bank), <http://www.rcsb.org/pdb/home/home.do>.

### 2.2. Determination of Target Protein

Determination of target protein from bioactive compounds in the neem leaves is conducted using SEA Target Prediction Webserver (<http://sea16.docking.org/>) and Swiss Target Prediction (<http://www.swisstargetprediction.ch/>) by entering canonical SMILE from each compound. The approach of the targeted protein prediction is based on the similarity of the composition of the compound inputted with compounds that have been shown to interact with certain proteins.

### 2.3. Molecular Docking

Docking is performed using Autodock Vina in the PyRx 9.5. Proteins used as a target are PPAR $\gamma$  (PDB ID 3E00 complex with GW9662 inhibitor) and ER $\alpha$  (PDB ID 3ERT complex with 4-hydroxytamoxifen inhibitor). Both proteins are selected because they are commonly target protein in the breast cancer treatment. PyMol 2.3.1 program is used to visualize the docking results, while LigPlot 2.1 program is used to see amino acid interactions.

### 2.4. Preparation of Structure and Molecule Code

Ligands for docking analysis are nimbin, deacetylnimbin, salanin, and deacetylsalanin. The SMILES code of the four ligands is converted to a 3D structure in PDB format using BIOVIA Discovery Studio 4.5 (20). This structure is used for docking ligands. The receptor structure is taken from PDB for PPAR $\gamma$  and ER $\alpha$ . The proteins or receptors are prepared using BIOVIA Discovery Studio.

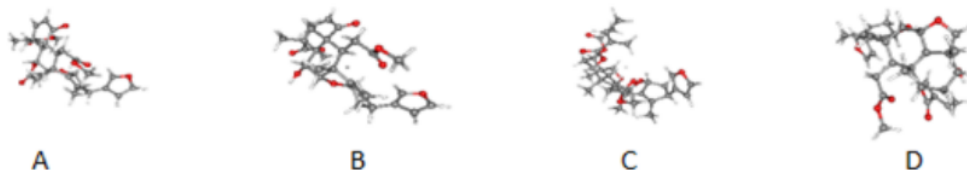


Figure 1. Three-dimensional structure of ligands: A) nimbin, B) deacetylnimbin C) salanin, and D) deacetylsalanin.

### 2.5. Validation of Molecular Docking Method

Validation of molecular docking methods is carried out using Autodock Application Tools (Autodock 4.2 and Autogrid) with docking back (redocking) native ligands in HER-2 protein in which the native ligand is removed. Parameter method validation is root mean square deviation (RMSD) which the value can be accepted  $\leq 3.0$  Å.

## 3. Result and Discussion

Hanahan and Weinberg [7] classified characteristics of cancer into several principles which are development, invasion, and metastasis cancer (Hallmarks of Cancer). Therefore, to study the development of cancer and its therapy, the principles and characteristics in the Hallmarks of Cancer need to be considered.

### 3.1. Predictions of Target Protein

Target proteins from bioactive compounds in the neem leaves can be predicted using Swiss Target Prediction to estimate the most possible molecular targets. This prediction is based on a combination of 2D and 3D structure similarities.

The bioactive compounds in the neem leaves are predicted to target proteins which play many roles in the cancer development such as interacting with EGFR in signaling proliferation and with proteins in inflammation, targeting proteins in angiogenesis and cyclin-dependent kinases (play in cell cycles), and being able to target MDM2 that binds p53 to repair DNA damage. The prediction of target proteins by bioactive compounds in the neem leaves is shown in **Table 1**.

**Table 1.** The Prediction of Target Proteins

Compound	Target Protein	Pa (Probability of Activity)
Deacetylnimbin	Macrophage migration inhibitory factor (MIF)	0.2800
	Epidermal growth factor receptor (EGFR)	0.2800
	Interleukin-8 receptor CXCR2, CXCR1	0.1032
	Vascular endothelial growth factor receptor 1 (FLT1)	0.1032
	Cyclin-dependent kinase (CDK)	0.1032
	MDM2	0.1032
Azadirachtin	Epidermal growth factor receptor (EGFR)	0.0499
Nimbin	Macrophage migration inhibitory factor (MIF)	0.3000
	MDM2	0.0900
	Colony stimulating factor 1 receptor (CSF1R)	0.0900

### 3.2. Molecular Docking Analysis

Docking performed in this study is specific docking by duplicating of the interaction between target proteins and ligand control. Docking is a method for predicting the strength of interactions between receptors and ligands based on binding affinity values. Strong interaction between receptors and ligands occurs if the value of binding affinity is more negative. Deacetylnimbin and nimbin compounds are more potential as ER $\alpha$  inhibitor than the other bioactive compounds. Docking analysis to PPAR $\gamma$  as protein target does not give good result so it is not analyzed further. The results of ER $\alpha$  docking with tamoxifen as control can be seen in **Table 2**.

**Table 2.** Result of ESR $\alpha$  Docking with Tamoxifen Control

Ligand	Binding Affinity (kcal/mol)
Deacetylnimbin	-6.3
Nimbin	-6.3
Deacetylsalanin	-2.8
Salanin	4.4
Tamoxifen (Control)	-9.8

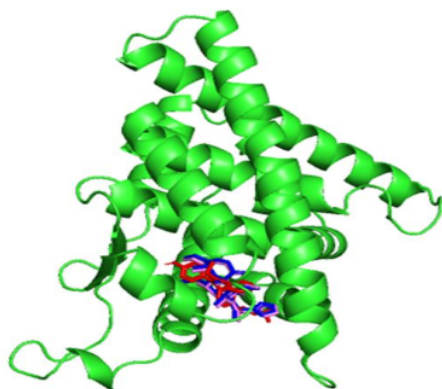
The result of docking shows that deacetylnimbin and nimbin have a high enough affinity to interact and inhibit the ER $\alpha$  activity with a binding affinity value of -6.5 kcal/mol. The value is closest to the binding affinity value of tamoxifen as a control, -9.8 kcal/mol.

### 3.3. Docking Analysis using Discovery Studio

Besides the value of binding affinity, analysis with Discovery Studio (DS) is also carried out to study interactions between ligands and proteins at the molecular up to the atomic level. The analysis shows deacetylnimbin interacts with the hydrophobic cave of ER $\alpha$  protein. In chemical bonds, interaction formed between amino acids of ER $\alpha$  and deacetylnimbin is hydrogen bond. Furthermore, hydrophobic interactions are also found on several sites of the protein as well as the ligand (**Figure 2**).

The number of hydrogen bonds formed in protein-ligand interactions contributes to the stability of the complex structure, in other words, the more number of hydrogen bonds formed, the more complex structure will be. Four hydrogen bonds in the protein-ligand interaction, it can form a stable complex structure [8]. Besides its binding affinity, analysis using DS shows interactions of hydrophobic and strong hydrogen bonds between ER $\alpha$  protein and deacetylnimbin. The hydrogen bonds and hydrophobic bonds optimization in protein-ligand interactions also influence bond stability between the ligand and its target [9]. When a sufficient number of hydrogen bonds are accompanied by hydrophobic interactions, it can be said that the interactions between the two molecules are quite strong interaction.

The stability of ER $\alpha$  protein and deacetylnimbin can be achieved when they bind. One possible mechanism to inhibit cancer development using deacetylnimbin is by preventing the interaction of ER $\alpha$  with its original ligand which has mitogenic signaling activity.



**Figure 2.** Visualization of ER $\alpha$  between ligands - tamoxifen (red), nimbin (blue), and deacetylnimbin (violet).

After calculating the binding affinity value, it is necessary to do further analysis of the interaction of amino acids between proteins and ligands using the LigPlot program. Based on LigPlot analysis, interaction of several amino acids is the same between bioactive compounds in the neem leaves and tamoxifen (control). It can be predicted that the bioactive compound in the neem leaves can interact with ER $\alpha$  similar to interactions of ER $\alpha$  and tamoxifen.

**Table 3.** Visualization using LigPlot Program

Compounds	Hydrophobic Bond Position	Hydrogen Bond Position	Hydrogen Bond Distance (Å)
Tamoxifen	LEU387, LEU349, EU346, MET421, LEU428, LY420, MET343, GLU419, IS524, GLY521, LEU525, RP383, ALA350, LEU384, THR347	GLU353, ARG394	ARG394 : 2.80 GLU353 : 2.75
Deacetylnimbin	LEU525, TRP383, HR347, LEU387, ALA350, LU353, ARG394, MET388, HE404, ILE424, LEU384, HIS524, GLY521, MET343, GLY420	LEU346	LEU346 : 3.26
Nimbin	TRP383, LEU525, ILE424, HIS524, MET343, GLY521, MET388, GLY420, LEU346, LEU391, LEU384, GLU353, PHE404, ARG394, LEU349, ALA350, THR347	Not identified	

Based on **Table 3**, it can be seen that deacetylnimbin and nimbin have 10 and 9 amino acids, respectively, which are the same as the amino acids of tamoxifen (control). The result proves that deacetylnimbin is more potential than nimbin. The hydrogen bond distance of ARG394 and GLU353 is 2.80 and 2.75 Å, respectively.

#### 3.4. Validation of Molecular Docking Method

Validation of molecular docking methods was done by redocking native ligand of ER $\alpha$  with pre-prepared ER $\alpha$  protein. Parameter of method validation is RMSD value that shows the distance of deviation from position native ligand binding with protein after docking to the native bonding position of the real ligand. The score of RMSD value can also be called distance bond. RMSD value obtained in this research is 0.7 Å which means the molecular docking method used has been validated. The visualization of interactions of molecular docking can be seen in **Figure 2**. The small RMSD value reflects the ligand position of the redocking result is closer to the crystallography result.



#### 4. Conclusion

Based on *in silico* analysis, deacetylnimbin is the most potential candidate to inhibit ER $\alpha$  protein compared to other compounds based on its binding affinity. It indicates that deacetylnimbin potent to replace tamoxifen drug to treat breast cancer. *In vitro* and *in vivo* studies are needed to validate *in silico* study.

#### References

- [1]. S. M. Patel, K. C. N. Venkata, P. Bhattacharyya, G. Sethi, & A. Bishayee, "Potential of Neem (*Azadirachta indica* L.) for Prevention and Treatment of Oncologic Diseases," *Seminars in Cancer Biology*, vol. 40-41, pp. 100-115, 2016.
- [2]. A. Arumugam, R. Subramani, S. Nandy, S. Powell, M. Velazquez, A. Orozco, A. Galvez, & R. Lakshmanaswamy, "Desacetyl nimbinene Inhibits Breast Cancer Growth and Metastasis through Reactive Oxygen Species Mediated Mechanisms," *Tumour Biology*, vol. 37, pp. 6527-6537, 2016.
- [3]. T. Singh, H. S. Saini, S. V. Ranganayakulu, S. Ravi, & K. Sudhakar, "Molecular Docking Assisted Isolation of Azadirachtin-A, from Seeds of *Azadirachta indica* Extract against Cervical Cancer," *Indian Journal of Science and Technology*, vol. 10, no. 12, pp. 1-5, 2017.
- [4]. A. Miller, H. Vo, L. Huo, C. Roca, P. J. Schmidt, & D. R. Rubinow, "Estrogen Receptor Alpha (ESR-1) Associations with Psychological Traits in Women with PMDD and Controls," *Journal of Psychiatric Research*, vol. 44, no. 12, pp. 788-794, 2010.
- [5]. V. Swamy, J. Deshpande, J. S. Pathageri, V. Kothekar, & S. Padhye, "Molecular Docking Studies on Estrogen Receptor - A and Chalcone Derivatives," *International Journal of Advances in Pharmacy and Biological Sciences*, vol. 1, no. 3, pp. 87-93, 2011.
- [6]. F. Yu & W. Bender, "The Mechanism of Tamoxifen in Breast Cancer Prevention," *Breast Cancer Research*, vol. 3, no. A74, 2001.
- [7]. D. Hanahan & R. A. Weinberg, "Hallmarks of Cancer: The Next Generation," *Cell*, vol. 144, pp. 646-674, 2011.
- [8]. A. Elengoe, M. A. Naser, & S. Hamdan, "Modeling and Docking Studies on Novel Mutants (K71L and T204V) of the ATPase Domain of Human Heat Shock 70 kDa Protein 1," *International Journal of Molecular Sciences*, vol. 15, no. 4, pp. 6797-6814, 2014.
- [9]. R. Patil, S. Das, A. Stanley, L. Yadav, A. Sudhakar, & A. K. Varma, "Optimized Hydrophobic Interactions and Hydrogen Bonding at the Target-Ligand Interface Leads the Pathways of Drug-Designing," *Plos One*, vol. 5, no. 8, pp. e12029, 2010.

# Potential Use of Compounds from Neem Leaves (*Azadirachta indica* Juss) as PPAR $\alpha$ and ER $\alpha$ Inhibitors to Control Breast Cancer Cell Growth In Silico Model

## ORIGINALITY REPORT

10%

SIMILARITY INDEX

8%

INTERNET SOURCES

6%

PUBLICATIONS

1%

STUDENT PAPERS

## PRIMARY SOURCES

1	<a href="http://repository.uin-malang.ac.id">repository.uin-malang.ac.id</a> Internet Source	1%
2	<a href="http://ojs.ptbioch.edu.pl">ojs.ptbioch.edu.pl</a> Internet Source	1%
3	<a href="http://prednisone.sjmit.ac.in">prednisone.sjmit.ac.in</a> Internet Source	1%
4	<a href="http://isca.in">isca.in</a> Internet Source	1%
5	<a href="http://journals.iium.edu.my">journals.iium.edu.my</a> Internet Source	1%
6	Cheng, Tiejun, Xun Li, Yan Li, Zhihai Liu, and Renxiao Wang. "Comparative Assessment of Scoring Functions on a Diverse Test Set", <i>Journal of Chemical Information and Modeling</i> , 2009. Publication	1%
7	<a href="http://e-journal.unair.ac.id">e-journal.unair.ac.id</a> Internet Source	<1%

8	<a href="http://www.koreascience.or.kr">www.koreascience.or.kr</a> Internet Source	<1 %
9	<a href="http://www.molvis.org">www.molvis.org</a> Internet Source	<1 %
10	Ana Mayela Ramos-de-la-Peña, Juan Carlos Contreras-Esquivel, Oscar Aguilar, José González-Valdez. "Structural and bioactive roles of fucoidan in nanogel delivery systems. A review", Carbohydrate Polymer Technologies and Applications, 2022 Publication	<1 %
11	<a href="http://foodandnutritionresearch.net">foodandnutritionresearch.net</a> Internet Source	<1 %
12	<a href="http://worldwidescience.org">worldwidescience.org</a> Internet Source	<1 %
13	<a href="http://www.frontiersin.org">www.frontiersin.org</a> Internet Source	<1 %
14	Linda Grabill, Andreas Riemann. "Conformational Impact on Amino Acid-Surface $\pi$ - $\pi$ Interactions on a (7,7) Single-Walled Carbon Nanotube: A Molecular Mechanics Approach", The Journal of Physical Chemistry A, 2018 Publication	<1 %
15	Rajeswari Jinka, Renu Kapoor, Pavana Goury Sistla, T. Avinash Raj, Gopal Pande.	<1 %



"Alterations in Cell-Extracellular Matrix Interactions during Progression of Cancers", International Journal of Cell Biology, 2012

Publication

16

Ruimin Fu, Yulian Zhang, Xue Yang, Wuling Chen. "Study on biogas production from corn straw pretreated by compound microorganisms", Energy Reports, 2022

Publication

<1 %

17

[pesquisa.bvsalud.org](https://pesquisa.bvsalud.org)

Internet Source

<1 %

18

[ularkin.org](https://ularkin.org)

Internet Source

<1 %

19

Dona Sinha, Jaydip Biswas, Seyed Mohammad Nabavi, Anupam Bishayee. "Tea phytochemicals for breast cancer prevention and intervention: From bench to bedside and beyond", Seminars in Cancer Biology, 2017

Publication

<1 %

20

Li, Zheng, and Themis Lazaridis. "Thermodynamics of Buried Water Clusters at a Protein–Ligand Binding Interface", The Journal of Physical Chemistry B, 2006.

Publication

<1 %

Exclude bibliography  On